



TECHNICAL SERVICE BULLETIN

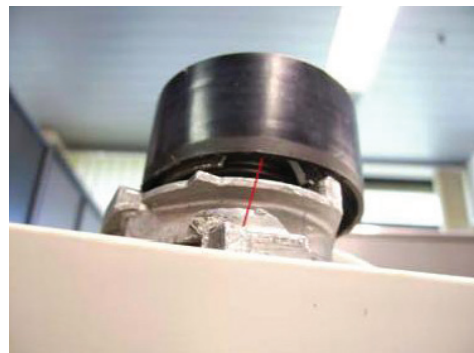
SYNCHRONOUS BELT DRIVE SYSTEM

TIMING SYSTEM TENSIONING ISSUES CHEVROLET AVEO



Gates engineers have identified a common issue during the setup of the timing system on these vehicles. Upon a closer look at the failure analysis, we have learned that drive failure is caused by not rotating the eccentric water pump to set proper tension, or setting tension while the engine is hot. Improper tensioning procedures result in a synchronous belt system that will not operate correctly, while drastically diminishing the life of the components. Use of a specific 41mm tool is required to turn the eccentric water pump.

Failure to follow the proper installation instructions can cause failures in the drive system. In this picture you can see the broken off pointer due to tensioner hitting the stops from improper tension, resulting in drive system failure.



PROPER INSTALLATION IS CRITICAL.
IMPROPER INSTALLATION WILL VOID WARRANTY AND
WILL MOST LIKELY RESULT IN MAJOR ENGINE DAMAGE.

BULLETIN TSB_037_US

PART NUMBER:

- TCK335
- TCKWP335
- T335

MAKE:

- Chevrolet

MODEL:

- Aveo

YEAR:

- 2004-2016

ENGINE:

- 1.6L

*Gates recommends the TCKWP335 Timing Component Kit with Water Pump for this installation due to loosening of the water pump and possibly disturbing the seal.

*On this drive it is important to remember that install procedure should be done with engine at ambient temperature. Failure to do so will cause improper tension in drive system.

FOLLOW @GATESAUTO

