



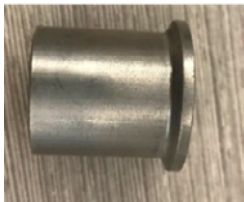
TECHNICAL SERVICE BULLETIN

SYNCHRONOUS BELT DRIVE SYSTEM

TENSIONER SPRING SPACER

When installing the cam tensioner it's imperative the lip edge of tensioner spring spacer face away from the engine in order to retain the spring.

SPRING SPACER



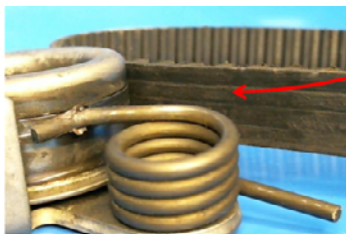
CORRECT



INCORRECT



Failure to install the spring correctly will cause loss of contact with tensioner and interfere with pulley operation. This will result in heat being transferred to the belt, which could cause catastrophic engine damage.



TSB_069_US

PART NUMBER:

- T282
- TCK282
- T41037
- T42016

MAKE

- Dodge,
- Hyundai,
- Kia

MODEL:

- Attitude
- Accent
- Getz
- Accent
- Matriz
- Accent
- Pride
- Rio
- Ceratol

YEAR:

- 1996 - 2012

ENGINE:

- 1.4
- 1.5
- 1.6

FOR MORE INFORMATION, PLEASE CONTACT OUR TECHNICAL DEPARTMENT AT APATEAM@GATES.COM.

FOLLOW @GATESAUTO

