

# PROBLEM SOLVER™ BULLETIN

BULLETIN: 27012

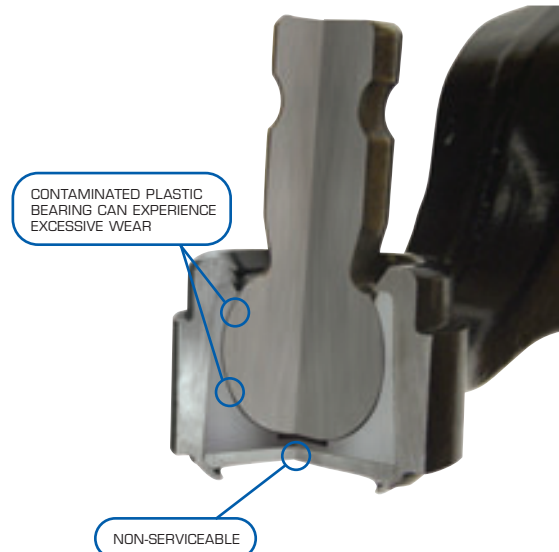
## Ford Control Arm with Ball Joint Ford Tempo, Escort, EXP Mercury Topaz, Lynx

www.moogproblemsolver.com

### PROBLEM:

#### Premature Wear

- Ball joints experience premature wear due to intrusion.
- Non-serviceable polymer socket cannot flush contamination, which quickly leads to corrosion and wear, causing excessive deflection in the socket assembly.
- Deflection in the socket assembly causes changes to alignment angles, resulting in steering and tire wear issues.
- Necessary mounting hardware is not included in other replacement part kits, forcing technicians to reuse old hardware.



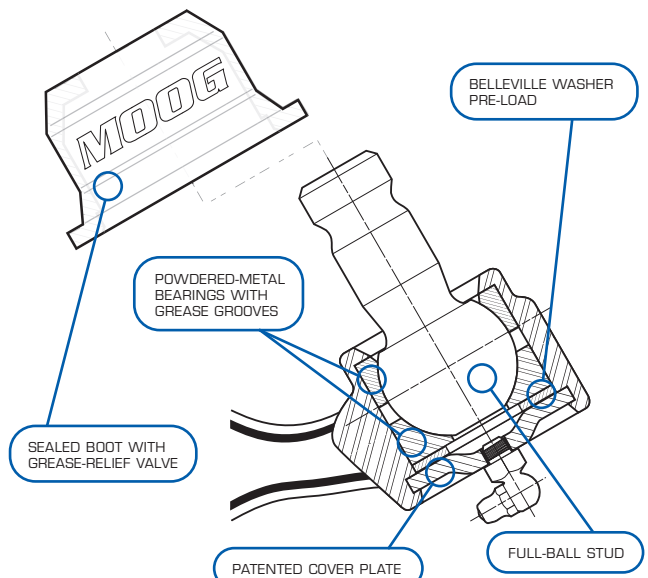
Year	Make/Model	Part Number
1984-1994	Mercury Topaz; Ford Tempo	K8421(right) & K8423 (left)
1984-1990	Ford Escort	K8421(right) & K8423 (left)
1984-1985	Ford EXP	K8421(right) & K8423 (left)
1984-1987	Mercury Lynx	K8421(right) & K8423 (left)

### SOLUTION:

#### MOOG® K8421 and K8423 control arms with ball joint



- MOOG replacement arms utilize powdered-metal bearings providing the most durable wear surface available.
- Patented cover plate design and Belleville washer pre-load ensure consistency throughout the life of the part.
- Greasable design ensures fresh lubrication reaches the bearing surfaces while flushing contaminants.
- Sealed boot with grease-relief valve keeps contaminants out while providing a sealed serviceable environment.
- K8421 & K8423 also include:
  - Premium OE bushings provided for frame and strut rod
  - New frame mounting hardware
  - New pinch bolt and nut
  - New strut rod nut



The Problem Solver™

