

PTC

Power Train Components, Inc.

PTC and You

Partners for Profit!

November, 2014

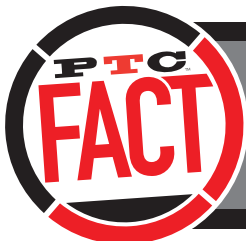
PTC Hub Assemblies Have A New Look Introducing Bold New Graphic Packaging



PTC has partnered with the largest OEM hub manufacturer in CHINA to bring the highest quality unit to market

Key Features and Benefits include:

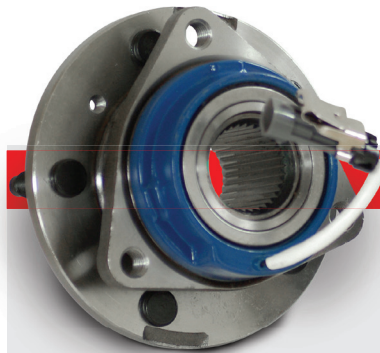
- OE design, fit and function for easy installation
- High tech production capabilities provides for tighter tolerances, and consistent quality
- Metallurgy testing eliminates metal fatigue - 1055 grade steel used
- ABS sensor testing eliminates connection problems
- Flange design improves noise/vibration characteristics and bearing performance
- Each hub includes water-tight seals containing premium long life grease
- Improved dimensional end testing to ensure end play meets OE standards (**end play is the key parameter to controlling noise**)



PTC is one of the largest private label suppliers to the aftermarket

PTC introduces its bold NEW Graphic Hub Assembly packaging. Perception means everything and PTC's new graphic box adds intrinsic value that instills confidence, acceptance and satisfaction to the professional installer as well as the DIY customer.

If you haven't reviewed the PTC Hub Assembly program lately, it's time to take a closer look.



Heavy Duty Hub Assemblies Available

PTC's "Heavy Duty" Hub Bearing Assemblies provide longer service life and an improved ABS signal, even under the most demanding driving conditions.

Key Features and Benefits include:

- Orbital roll-formed design applies precise pre-load to enhance performance and decrease failure
- High grade steel bearing balls provide smooth rotation, increased load capacity and longer life
- Flange thickness increased 30% for improved rigidity
- Both dynamic and static loads increased 11% over OE design

CURRENT AVAILABILITY

PT 513121HD
PT 513124HD
PT 513137HD
PT 513179HD
PT 513187HD
PT 513199HD
PT 515036HD

[Click Here](#) for a complete list of all the New Hub Assembly now available.