

INSTRUCTION SHEET

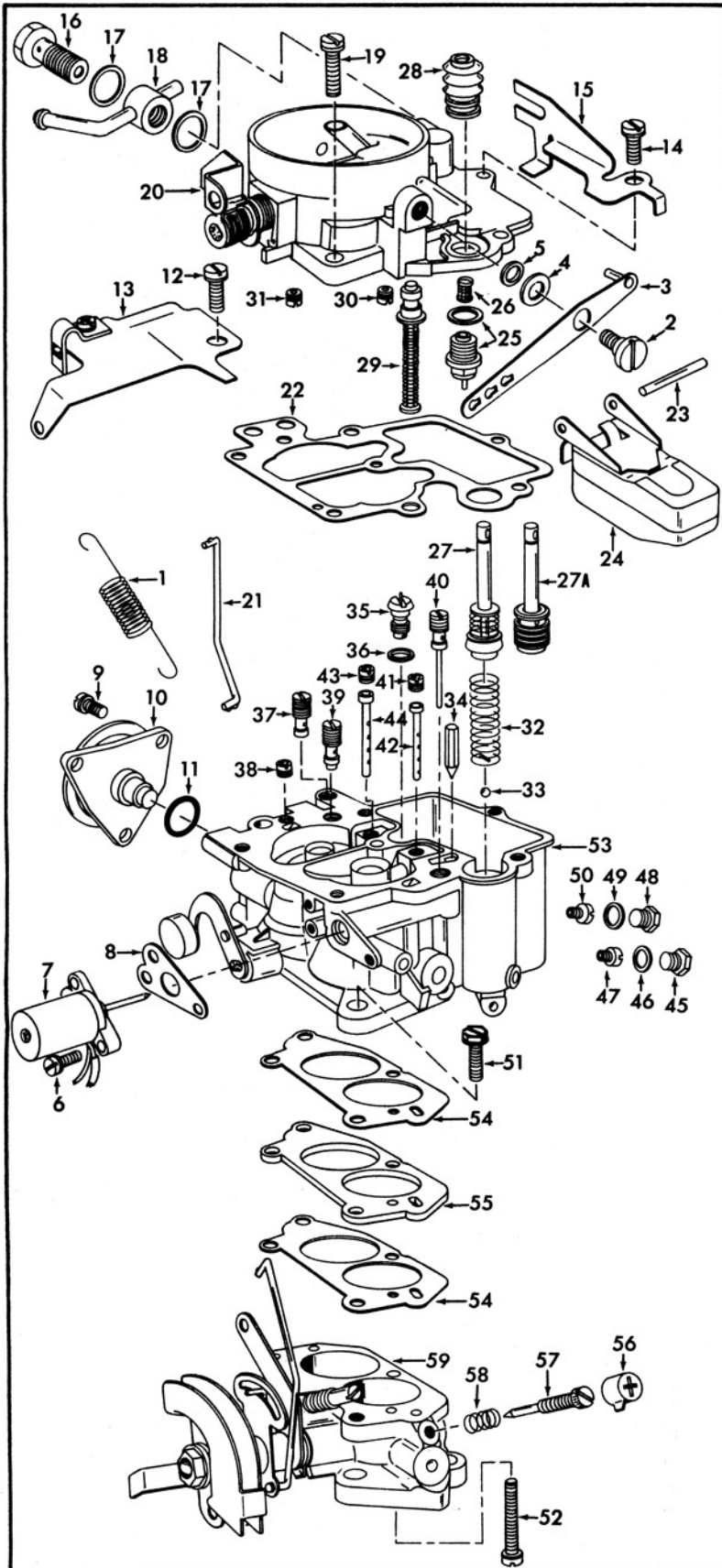
HITACHI CARBURETOR — MODEL DCG-306

SUBARU

08050-486-2

GENERAL EXPLODED VIEW

THE GENERAL DESIGN AND PARTS SHOWN WILL VARY TO
INDIVIDUAL UNITS COVERED ON THIS INSTRUCTION SHEET



DISASSEMBLY

USE EXPLODED VIEW AS A GUIDE. THE NUMERICAL SEQUENCE MAY GENERALLY BE FOLLOWED TO DISASSEMBLE UNIT FAR ENOUGH TO PERMIT CLEANING AND INSPECTION. REMOVE STAKING FROM BOWL COVER FOR EASY REMOVAL OF POWER PISTON ASSY. (29). SOME MODELS HAVE A BRASS PUMP PLUNGER AND WILL BE USED OVER. **CAUTION:** NOTE SIZES OF JETS AND THEIR LOCATION FOR PROPER REASSEMBLY. (RECORD SIZES BELOW.)

NOMENCLATURE

REF. NO.	NOMENCLATURE	REF. NO.	NOMENCLATURE
1.	SPRING - THROTTLE RETURN	30.	JET - PRIMARY SLOW AIR BLEED
2.	SCREW - PUMP LEVER	31.	JET - SECONDARY SLOW AIR BLEED
3.	PUMP LEVER	32.	SPRING - PUMP RETURN
4.	WASHER - PUMP LEVER SCREW	33.	BALL - PUMP INTAKE CHECK
5.	LOCKWASHER - PUMP LEVER SCREW	34.	NEEDLE - PUMP DISC. CHECK
6.	SCREW & LOCKWASHER (3) - ANTIDIESELING SOLENOID	35.	POWER VALVE
7.	SOLENOID ASSY. - ANTIDIESELING	36.	GASKET - POWER VALVE
8.	GASKET - ANTIDIESELING SOLENOID	37.	JET - THROTTLE BY PASS
9.	SCREW & LOCKWASHER (3) - THROTTLE BY PASS VALVE	38.	JET - THROTTLE BY PASS AIR
10.	VALVE - THROTTLE BY PASS	39.	JET - SECONDARY SLOW
11.	O-RING SEAL - THROTTLE BY PASS VALVE	40.	JET - PRIMARY SLOW
12.	SCREW & LOCKWASHER - CHOKE BRACKET	41.	JET - PRIMARY MAIN AIR BLEED
13.	BRACKET - CHOKE CABLE	42.	TUBE - PRIMARY EMULSION (SOLID END)
14.	SCREW & LOCKWASHER - INLET PIPE BRACKET	43.	JET - SECONDARY MAIN AIR BLEED
15.	BRACKET - INLET PIPE	44.	TUBE - SECONDARY EMULSION (OPEN END)
16.	BOLT - FUEL INLET BANJO	45.	PLUG - PRIMARY MAIN JET
17.	GASKET (2) - FUEL INLET BANJO	46.	GASKET - PLUG
18.	BANJO FITTING - FUEL INLET	47.	JET - PRIMARY MAIN
19.	SCREW & LOCKWASHER (3) - BOWL COVER	48.	PLUG - SECONDARY MAIN JET
20.	BOWL COVER ASSY.	49.	GASKET - PLUG
21.	ROD - FAST IDLE	50.	JET - SECONDARY MAIN
22.	GASKET - BOWL COVER	51.	SCREW & LOCKWASHER (2) - THROTTLE BODY
23.	PIN - FLOAT	52.	SCREW & LOCKWASHER (HOLLOW) - THROTTLE BODY
24.	FLOAT & LEVER ASSY.	53.	BOWL ASSY.
25.	NEEDLE & SEAT ASSY.	54.	GASKET (2) - THROTTLE BODY SPACER
26.	SCREEN - FUEL FILTER	55.	SPACER - THROTTLE BODY
27.	PUMP ASSY.	56.	CAP IDLE LIMITER (SOME MODELS)
27A.	PUMP ASSY. (BRASS) SOME MODELS	57.	NEEDLE - IDLE ADJUSTING
28.	BOOT - PUMP STEM	58.	SPRING - IDLE ADJ. NEEDLE
29.	POWER PISTON ASSY.	59.	THROTTLE BODY ASSY.

CLEANING

CLEANING MUST BE DONE WITH CARBURETOR DISASSEMBLED. SOAK PARTS LONG ENOUGH TO SOFTEN AND REMOVE ALL FOREIGN MATERIAL. USE A CARBURETOR CLEANING SOLVENT. MAKE CERTAIN THE THROTTLE BODY IS FREE OF ALL CARBON DEPOSITS. WASH OFF IN SUITABLE SOLVENT. BLOW OUT ALL PASSAGES IN CASTINGS WITH COMPRESSED AIR AND CHECK CAREFULLY TO INSURE THOROUGH CLEANING OF OBSCURE AREAS. **CAUTION:** BE VERY CAREFUL NOT TO LEAVE FUEL BOWL ASSY. (53) IN CLEANING SOLVENT TO LONG BECAUSE OF THE GLASS WINDOW RUBBER SEAL WHICH IS NOT REPLACEABLE. DO NOT SOAK ASSEMBLIES WITH ATTACHED PLASTIC PARTS FOR A LONG PERIOD OF TIME. DO NOT SOAK ANY PARTS CONTAINING RUBBER OR DIAPHRAGM AND SOLENOID ASSEMBLIES.

REASSEMBLY

REASSEMBLE IN REVERSE ORDER OF DISASSEMBLY. NOTE: SPECIAL INSTRUCTIONS AND FOLLOW NUMERICAL OUTLINE IN MAKING ADJUSTMENTS NECESSARY FOR CARBURETOR BEING SERVICED.

SPECIAL INSTRUCTIONS

IDLE ADJUSTING NEEDLE (57) - TURN NEEDLE IN UNTIL LIGHTLY SEATED THEN BACK OUT 2 TURNS. (DO NOT INSTALL IDLE LIMITER CAP AT THIS TIME.)

PUMP RETURN SPRING (32) - INSTALL WITH CROSS WIRE TO THE BOTTOM OF PUMP CYLINDER.

POWER PISTON (29) - AFTER INSTALLING LIGHTLY RESTAKE CASTING AROUND WASHER.

PUMP PLUNGER (27) - BEFORE INSTALLING FLEX LEATHER OUTWARD SLIGHTLY. SOAK CUP IN GASOLINE, KEROSENE OR OIL FOR A FEW MINUTES PRIOR TO PLACING IN CARBURETOR.

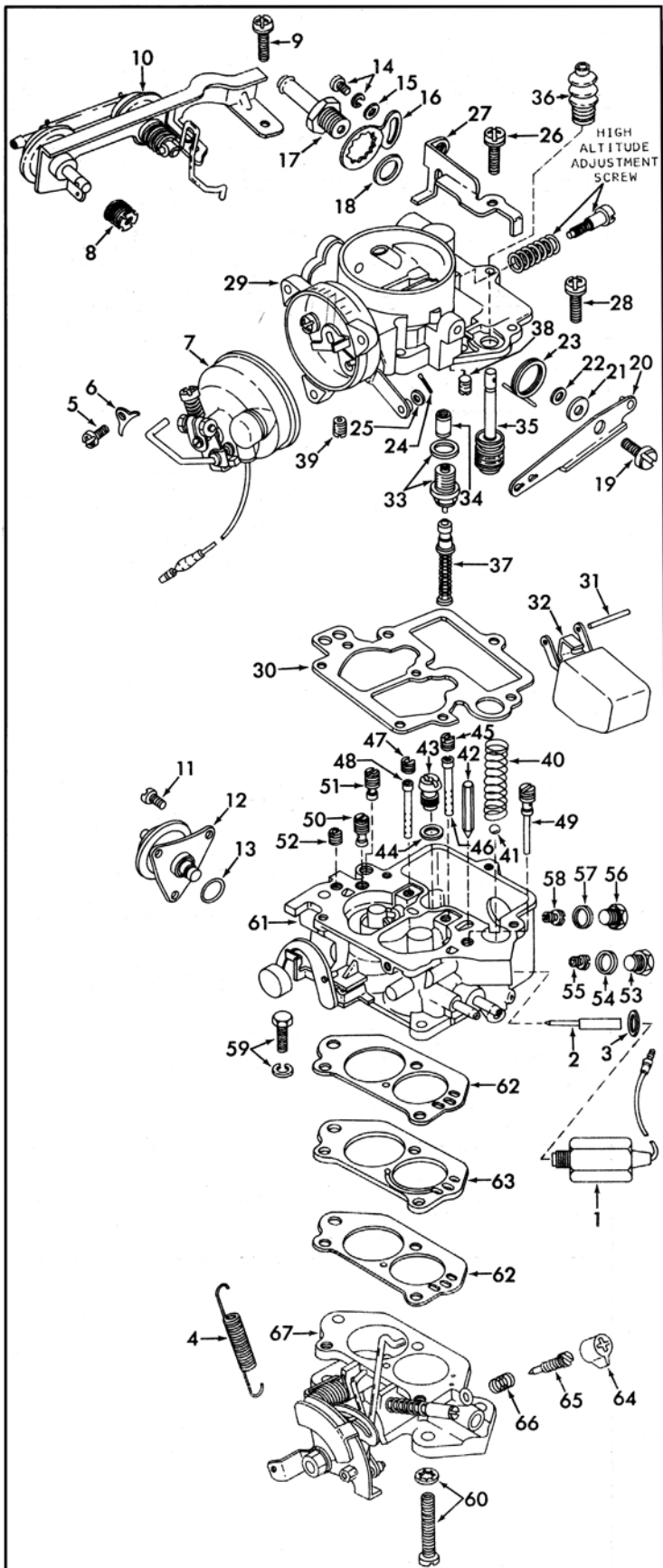
PUMP LEVER (3) - HOOK PUMP ROD IN CENTER HOLE OF LEVER.

INSTRUCTION SHEET

HITACHI CARBURETOR — MODEL DCJ-306

GENERAL EXPLODED VIEW

THE GENERAL DESIGN AND PARTS SHOWN WILL VARY TO
INDIVIDUAL UNITS COVERED ON THIS INSTRUCTION SHEET.



DISASSEMBLY

USE EXPLODED VIEW AS A GUIDE. THE NUMERICAL SEQUENCE MAY GENERALLY BE FOLLOWED TO DISASSEMBLE UNIT FAR ENOUGH TO PERMIT CLEANING AND INSPECTION. REMOVE STAKING FROM BOWL COVER FOR EASY REMOVAL OF POWER PISTON ASSY.(37). THE BRASS PUMP PLUNGER WILL BE USED OVER. CAUTION: NOTE SIZES OF JETS AND THEIR LOCATION FOR PROPER REASSEMBLY. (RECORD SIZES BELOW.)

NOMENCLATURE

REF. NO.	REF. NO.
1. SWITCH-ANTI-DIESELING	33. NEEDLE, SEAT & GASKET ASSY.
2. PLUNGER-SWITCH	34. SCREEN-NEEDLE SEAT
3. GASKET-SWITCH	35. PUMP ASSY.
4. SPRING-THROTTLE RETURN	36. BOOT-PUMP STEM
5. SCREW(3)-CHOKE COVER RETAINER	37. POWER PISTON ASSY.
6. RETAINER(3)-CHOKE COVER	38. JET-PRIMARY SLOW AIR BLEED
7. CHOKE COVER & LINK ASSY.	39. JET-SECONDARY SLOW AIR BLEED
8. SPRING-AUX. VACUUM UNIT	40. SPRING-PUMP RETURN
9. SCREW & LOCKWASHER(2)-VACUUM UNIT BRACKET	41. BALL-PUMP CHECK(NYLON)
10. VACUUM UNIT ASSY.-MAIN & AUX.	42. NEEDLE-PUMP DISC CHECK
11. SCREW & LOCKWASHER(3)-BY PASS VALVE	43. POWER VALVE
12. VALVE-THROTTLE BY PASS	44. GASKET-POWER VALVE
13. O-RING-BY PASS VALVE	45. JET-PRIMARY AIR BLEED
14. SCREW & LOCKWASHER-FUEL INLET LOCK	46. TUBE-PRIMARY EMULSION(SOLID END)
15. WASHER-SCREW	47. JET-SECONDARY SLOW AIR BLEED
16. LOCK TAB-FUEL INLET FITTING	48. TUBE-SECONDARY EMULSION(OPEN END)
17. FITTING-FUEL INLET	49. JET-PRIMARY SLOW
18. GASKET-FITTING	50. JET-SECONDARY SLOW
19. SCREW STUD-PUMP LEVER	51. JET-THROTTLE BY PASS
20. LEVER-PUMP	52. JET-THROTTLE BY PASS AIR
21. FLATWASHER-LEVER SCREW	53. PLUG-PRIMARY MAIN JET
22. LOCKWASHER-LEVER SCREW	54. GASKET-PLUG
23. SPRING-PUMP LEVER	55. JET-PRIMARY MAIN
24. COTTER PIN-CHOKE ROD	56. PLUG-SECONDARY MAIN JET
25. WASHER-CHOKE ROD	57. GASKET-PLUG
26. SCREW & LOCKWASHER-BRACKET	58. JET-SECONDARY MAIN JET
27. BRACKET-FUEL FITTING LOCK	59. SCREW & LOCKWASHER(2)-THROTTLE BODY
28. SCREW & LOCKWASHER(2)-BOWL COVER	60. SCREW & LOCKWASHER(HOLLOW)-THROTTLE BODY
29. BOWL COVER ASSY.	61. BOWL ASSY.
30. GASKET-BOWL COVER	62. GASKET(2)-THROTTLE BODY SPACER
31. PIN-FLOAT	63. SPACER-THROTTLE BODY
32. FLOAT & LEVER ASSY.	64. CAP-IDLE LIMITER
	65. NEEDLE-IDLE ADJUSTING
	66. SPRING-IDLE ADJ. NEEDLE
	67. THROTTLE BODY ASSY.

CLEANING

CLEANING MUST BE DONE WITH CARBURETOR DISASSEMBLED. SOAK PARTS LONG ENOUGH TO SOFTEN AND REMOVE ALL FOREIGN MATERIAL. USE A CARBURETOR CLEANING SOLVENT. MAKE CERTAIN THE THROTTLE BODY IS FREE OF ALL CARBON DEPOSITS. WASH OFF IN SUITABLE SOLVENT. BLOW OUT ALL PASSAGES IN CASTINGS WITH COMPRESSED AIR AND CHECK CAREFULLY TO INSURE THOROUGH CLEANING OF OBSCURE AREAS. CAUTION: BE VERY CAREFUL NOT TO LEAVE FUEL BOWL ASSY. (61) IN CLEANING SOLVENT TOO LONG BECAUSE OF THE GLASS WINDOW RUBBER SEAL WHICH IS NOT REPLACEABLE. DO NOT SOAK ASSEMBLIES WITH ATTACHED PLASTIC PARTS FOR A LONG PERIOD OF TIME. DO NOT SOAK ANY PARTS CONTAINING RUBBER OR DIAPHRAGM AND SOLENOID ASSEMBLIES.

REASSEMBLY

REASSEMBLE IN REVERSE ORDER OF DISASSEMBLY. NOTE SPECIAL INSTRUCTIONS AND FOLLOW NUMERICAL OUTLINE IN MAKING ADJUSTMENTS NECESSARY FOR CARBURETOR BEING SERVICED.

SPECIAL INSTRUCTIONS

IDLE ADJUSTING NEEDLE (65) - TURN NEEDLE IN UNTIL LIGHTLY SEATED, THEN BACK OUT 2 TURNS. (DO NOT INSTALL IDLE LIMITER CAP AT THIS TIME.)

PUMP RETURN SPRING (40) - INSTALL WITH CROSS WIRE TO THE BOTTOM OF PUMP CYLINDER.

POWER PISTON (37) - AFTER INSTALLING LIGHTLY RESTAKE CASTING AROUND WASHER.

PUMP LEVER (20) - HOOK PUMP ROD IN INNER HOLE OF LEVER.

ADJUSTMENTS

