

# INSTRUCTION SHEET

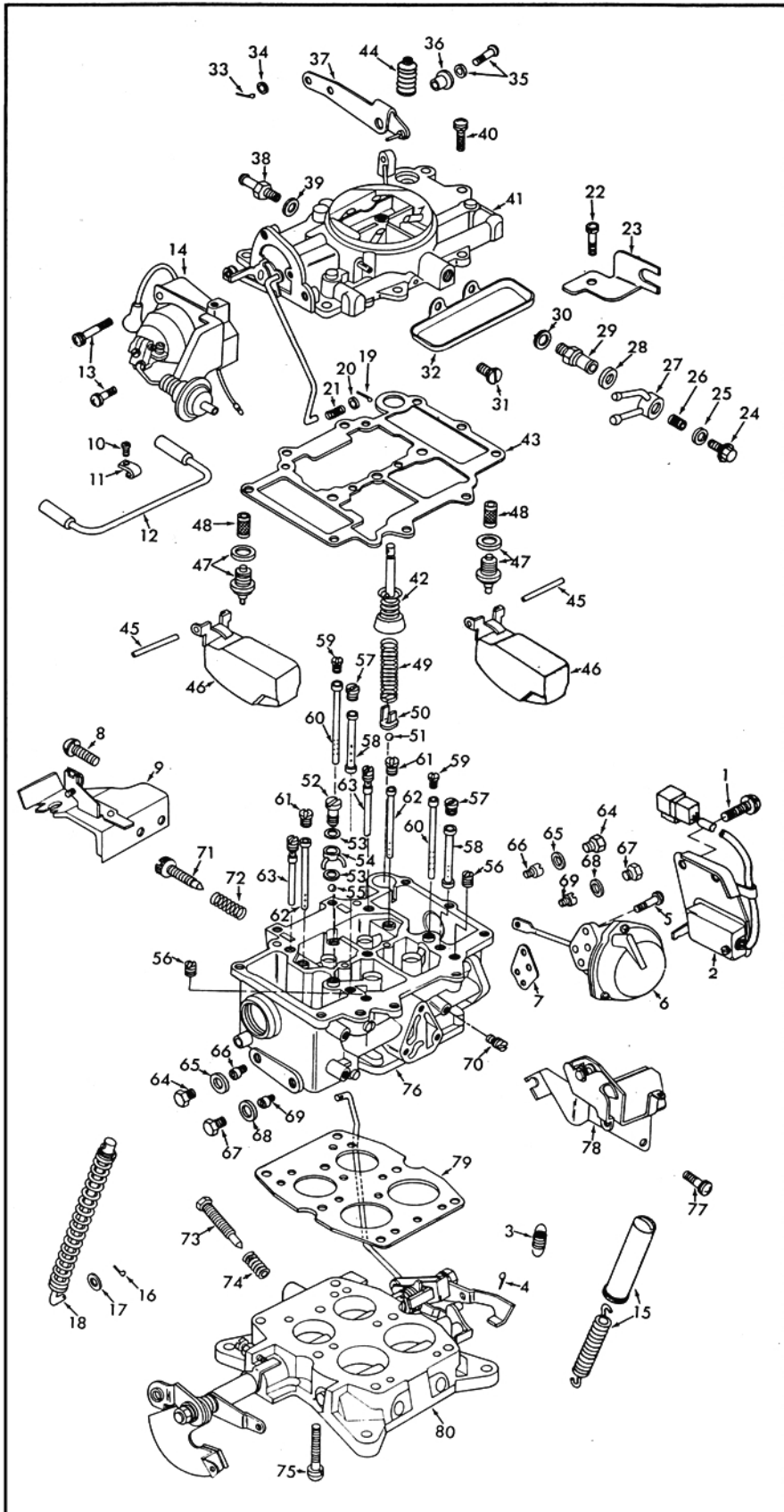
## HITACHI CARBURETOR — 4 BORE

### MAZDA RX-4 AND ROTARY PICK UP

08050-511

#### GENERAL EXPLODED VIEW

THE GENERAL DESIGN AND PARTS SHOWN WILL VARY TO  
INDIVIDUAL UNITS COVERED ON THIS INSTRUCTION SHEET.



#### DISASSEMBLY

USE EXPLODED VIEW AS A GUIDE. THE NUMERICAL SEQUENCE MAY GENERALLY BE FOLLOWED TO DISASSEMBLE UNIT FAR ENOUGH TO PERMIT CLEANING AND INSPECTION. NOTE: DISASSEMBLY OF SECONDARY DIAPHRAGM ASSY. (6) IS NOT NECESSARY UNLESS DIAPHRAGM IS BEING REPLACED. JETS ARE IN PAIRS SO BE SURE TO RECORD SIZES BELOW FOR PROPER ASSEMBLY.

#### NOMENCLATURE

REF. NO.	REF. NO.
1. SCREW & LOCKWASHER (2) - SWITCH BRACKET	41. BOWL COVER ASSY.
2. IDLE SWITCH ASSY.	42. PUMP ASSY.
3. SPRING - SWITCH OPERATING LEVER	43. GASKET - BOWL COVER
4. COTTER PIN-SEC. DIAPHRAGM STEM	44. BOOT - PUMP STEM
5. SCREW & LOCKWASHER (3) - SEC. DIAPHRAGM ASSY.	45. PIN (2) - FLOAT
6. SECONDARY DIAPHRAGM ASSY.	46. FLOAT ASSY. (2)
7. GASKET - SEC. DIAPHRAGM ASSY.	47. NEEDLE, SEAT, & GASKET ASSY. (2)
8. SCREW & LOCKWASHER (2) - CHOKE CABLE BRACKET	48. SCREEN - NEEDLE SEAT
9. BRACKET - CHOKE CABLE	49. SPRING-PUMP RETURN
10. SCREW & LOCKWASHER-VAC. TUBE CLAMP	50. RETAINER-PUMP INTAKE BALL
11. CLAMP - VAC. TUBE	51. BALL-PUMP INTAKE CHECK (NYLON)
12. VACUUM TUBE ASSY.	52. SCREW & JET - PUMP NOZZLE
13. SCREW & LOCKWASHER (2) - CHOKE ASSY.	53. GASKET (2) - PUMP NOZZLE
14. CHOKE & VAC. BREAK ASSY.	54. NOZZLE - PUMP
15. SPRING & COVER - RETURN	55. BALL - PUMP DISC. CHECK (STEEL)
16. COTTER PIN-RETURN SPRING ROD	56. JET (2) - SEC. SLOW AIR BLEED
17. WASHER-RETURN SPRING ROD	57. JET (2) - SEC. SLOW AIR BLEED
18. SPRING & ROD ASSY.-RETURN	58. JET (2) - SEC. STEP
19. COTTER PIN - CHOKE ROD	59. JET (2) - SEC. MAIN AIR BLEED
20. WASHER - CHOKE ROD	60. TUBE (2) - SEC. EMULSION (LONG)
21. SPRING - CHOKE ROD	61. JET (2) - PRI. MAIN AIR BLEED
22. SCREW & LOCKWASHER-FUEL NIPPLE BRACKET	62. TUBE (2) - PRI. EMULSION (SHORT)
23. BRACKET - FUEL NIPPLE	63. JET (2) - PRI. STEP
24. BOLT - FUEL NIPPLE	64. PLUG (2) - PRI. MAIN JET
25. WASHER - BOLT	65. GASKET (2) - PLUG
26. SCREEN - FUEL INLET	66. JET (2) - PRI. MAIN
27. FUEL NIPPLE ASSY.	67. PLUG (2) - SEC. MAIN JET
28. WASHER - FUEL NIPPLE	68. GASKET (2) - PLUG
29. FITTING - FUEL INLET	69. JET (2)-SEC. MAIN JET
30. GASKET-FUEL INLET FITTING	70. JET - SEC. SLOW
31. SCREW & LOCKWASHER (2) - FUEL TRAY	71. SCREW - AIR ADJUSTING
32. FUEL TRAY	72. SPRING - AIR ADJ. SCREW
33. COTTER PIN - PUMP ROD	73. NEEDLE - IDLE ADJUSTING
34. WASHER - PUMP ROD	74. SPRING - IDLE ADJ. NEEDLE
35. SCREW & LOCKWASHER - PUMP LEVER	75. SCREW & LOCKWASHER (6) - THROTTLE BODY
36. COLLAR -PUMP LEVER	76. BOWL ASSY.
37. LEVER - PUMP	77. SCREW & LOCKWASHER (2) - BRACKET ASSY.
38. VALVE - CHECK	78. BRACKET ASSY.
39. GASKET - CHECK VALVE	79. GASKET - THROTTLE BODY
40. SCREW & LOCKWASHER (8) - BOWL COVER	80. THROTTLE BODY ASSY.

#### CLEANING

CLEANING MUST BE DONE WITH CARBURETOR DISASSEMBLED. SOAK PARTS LONG ENOUGH TO SOFTEN AND REMOVE ALL FOREIGN MATERIAL. USE A CARBURETOR CLEANING SOLVENT. MAKE CERTAIN THE THROTTLE BODY IS FREE OF ALL CARBON DEPOSITS. WASH OFF IN SUITABLE SOLVENT. BLOW OUT ALL PASSAGES IN CASTINGS WITH COMPRESSED AIR AND CHECK CAREFULLY TO INSURE THOROUGH CLEANING OF OBSCURE AREAS. CAUTION: DO NOT SOAK UNITS SUCH AS IDLE SWITCH ASSY. (2), SECONDARY DIAPHRAGM ASSY. (6), CHOKE & VAC. BREAK ASSY. (14), FLOAT ASSY. (46), OR RUBBER PARTS IN CLEANING SOLVENT.

#### REASSEMBLY

REASSEMBLE IN REVERSE ORDER OF DISASSEMBLY. NOTE SPECIAL INSTRUCTIONS AND ADJUSTMENTS.

#### SPECIAL INSTRUCTIONS

IDLE ADJUSTING NEEDLE (73) - TURN IN UNTIL LIGHTLY SEATED, THEN BACK OUT 2 TURNS.

IDLE SPEED (AIR) ADJUSTING SCREW (71)-TURN IN UNTIL LIGHTLY SEATED, THEN BACK OUT 4-5 TURNS.

PUMP RETURN SPRING (49)-INSTALL SPRING (49) WITH CROSS WIRE END INTO U-SHAPED BALL RETAINER (50).

PUMP PLUNGER (42) - REMOVE PAPER SLEEVE FROM LEATHER CUP IF USED. FLEX LEATHER OUTWARD SLIGHTLY. SOAK CUP IN LIGHT OIL FOR A FEW MINUTES PRIOR TO PLACING IN CARBURETOR.

CHOKE & VAC BREAK ASSY. (14)-WHEN INSTALLING, BE SURE LEVER ON CHOKE SHAFT IS PROPERLY INSERTED IN HOOK ON CHOKE COIL SPRING.

ADJUST CURB IDLE AS PER ENGINE DECAL OR CAR SERVICE MANUAL.

# ADJUSTMENTS

