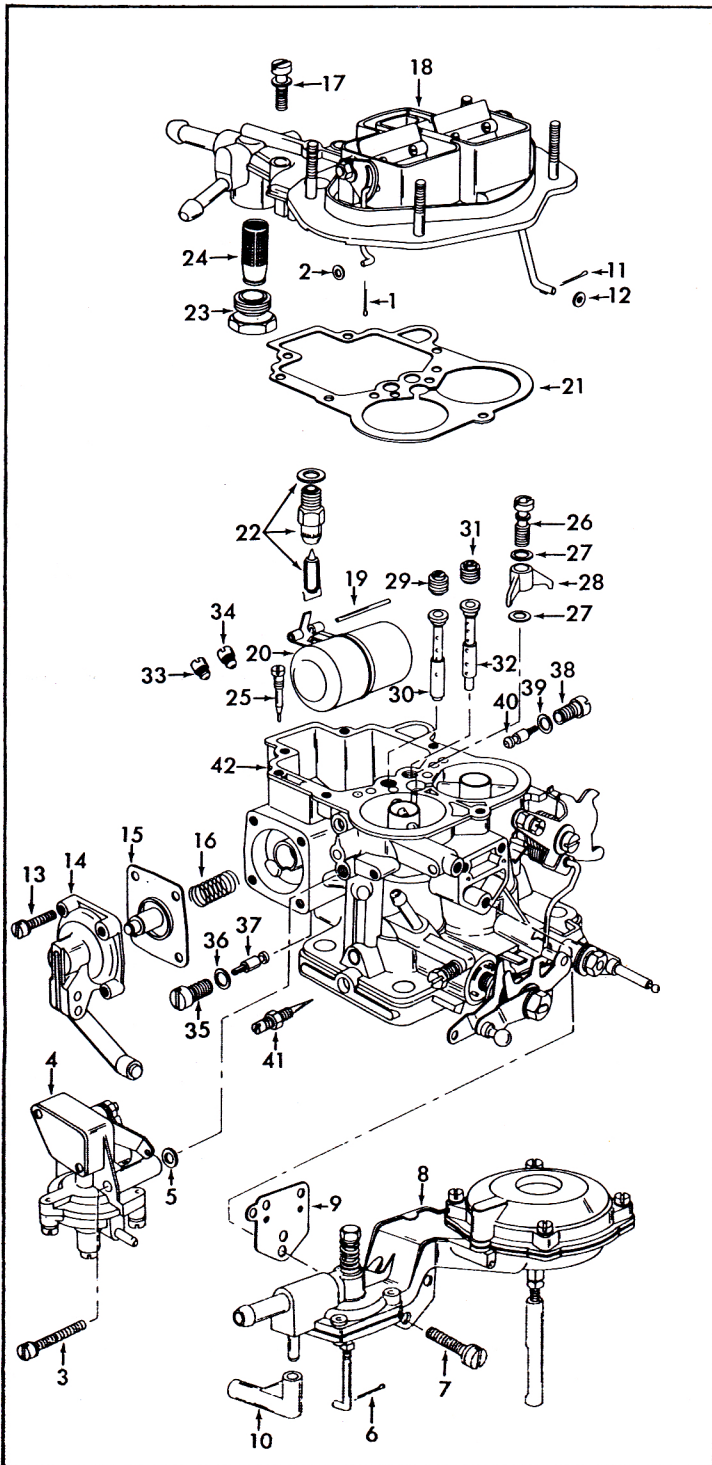


INSTRUCTION SHEET

WEBER CARBURETOR — MODEL DHSA

GENERAL EXPLODED VIEW

THE GENERAL DESIGN AND PARTS SHOWN WILL VARY TO INDIVIDUAL UNITS COVERED ON THIS INSTRUCTION SHEET.



DISASSEMBLY

USE EXPLODED VIEW AS A GUIDE. THE NUMERICAL SEQUENCE MAY GENERALLY BE FOLLOWED TO DISASSEMBLE UNIT FAR ENOUGH TO PERMIT CLEANING AND INSPECTION. BE CAREFUL TO NOTE SIZES OF JETS AND MAIN WELL TUBES AND THEIR LOCATION FOR PROPER ASSEMBLY. (RECORD SIZES ON INSTRUCTION SHEET.) CAUTION: SCREWS AND NUTS USED IN THIS CARBURETOR HAVE METRIC THREADS. DO NOT SUBSTITUTE U.S. THREADED SCREWS OR NUTS.

NOMENCLATURE

REF. NO.	REF. NO.
1. COTTER PIN - CHOKE VALVE ROD	21. GASKET - FLOAT BOWL
2. WASHER - CHOKE VALVE ROD	22. NEEDLE, SEAT & GASKET ASSY.
3. SCREW & LOCKWASHER - CHOKE VALVE	23. PLUG - FILTER SCREEN
4. CHOKE PULL OFF VALVE	24. SCREEN - FUEL FILTER
5. SEAL - CHOKE PULL OFF VALVE	25. PLUG - PUMP CHANNEL
6. COTTER PIN - FAST IDLE VALVE ROD	26. VALVE ASSY. - PUMP DISC.
7. SCREW & LOCKWASHER - FAST IDLE & SECONDARY VALVE ASSY.	27. GASKET (2) - PUMP NOZZLE
8. VALVE ASSY. - FAST IDLE & SECONDARY THROTTLE	28. NOZZLE - PUMP DISCHARGE
9. GASKET - VALVE ASSY.	29. JET - PRIMARY AIR CORRECTION
10. TUBE - VALVE CONNECTOR	30. TUBE - PRIMARY EMULSION
11. COTTER PIN - CHOKE ROD	31. JET - SECONDARY AIR CORRECTION
12. WASHER - CHOKE ROD	32. TUBE - SECONDARY EMULSION
13. SCREW & LOCKWASHER - PUMP COVER	33. JET - PRIMARY MAIN
14. PUMP COVER ASSY.	34. JET - SECONDARY MAIN
15. DIAPHRAGM ASSY. - PUMP	35. JET HOLDER - PRIMARY IDLE
16. SPRING - PUMP DIAPHRAGM RETURN	36. SEAL - PRIMARY JET HOLDER
17. SCREW & LOCKWASHER - BOWL COVER	37. JET IDLE - PRIMARY
18. BOWL COVER ASSEMBLY	38. JET HOLDER - SECONDARY IDLE
19. PIN - FLOAT HINGE	39. SEAL - SECONDARY JET HOLDER
20. FLOAT ASSEMBLY	40. IDLE JET - SECONDARY
	41. NEEDLE & LOCKNUT - IDLE ADJUSTING
	42. MAIN BODY ASSEMBLY

CLEANING

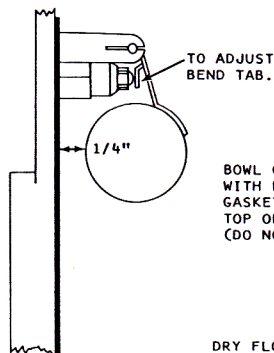
CLEANING MUST BE DONE WITH CARBURETOR DISASSEMBLED. SOAK PARTS LONG ENOUGH TO SOFTEN AND REMOVE ALL FOREIGN MATERIAL. USE A CARBURETOR CLEANING SOLVENT. MAKE CERTAIN THE THROTTLE BORES ARE FREE OF ALL CARBON AND VARNISH DEPOSITS. RINSE OFF IN SUITABLE SOLVENT. BLOW OUT ALL PASSAGES IN CASTINGS WITH COMPRESSED AIR AND CHECK CAREFULLY TO INSURE THOROUGH CLEANING OF OBSCURE AREAS. CAUTION: DO NOT SOAK ASSEMBLYS WITH ATTACHED PLASTIC PARTS FOR A LONG PERIOD OF TIME. DO NOT SOAK ANY PARTS CONTAINING RUBBER OR DIAPHRAGM ASSEMBLYS IN CLEANING SOLVENTS.

REASSEMBLY

REASSEMBLE IN REVERSE ORDER OF DISASSEMBLY. NOTE: SPECIAL INSTRUCTIONS AND ADJUSTMENTS.

SPECIAL INSTRUCTIONS

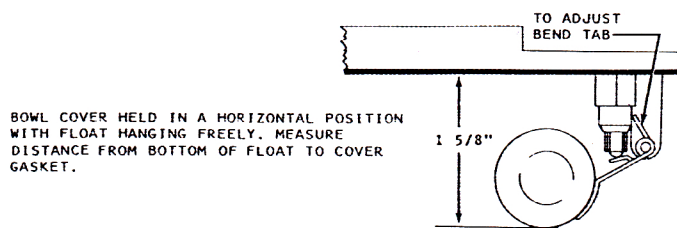
IDLE ADJUSTING NEEDLE (41) - TURN IN UNTIL SEATED, THEN BACK OUT 1 1/2 TURNS.



CAUTION: DO NOT EXERT PRESSURE ON RESILIENT NEEDLE VALVE.

BOWL COVER HELD IN VERTICAL POSITION WITH FLOAT HANGING DOWN AND BOWL COVER GASKET IN PLACE. MEASURE DISTANCE FROM TOP OF FLOAT TO BOWL COVER GASKET. (DO NOT COMPRESS SPRING LOADED NEEDLE)

DRY FLOAT LEVEL ADJUSTMENT



BOWL COVER HELD IN A HORIZONTAL POSITION WITH FLOAT HANGING FREELY. MEASURE DISTANCE FROM BOTTOM OF FLOAT TO COVER GASKET.

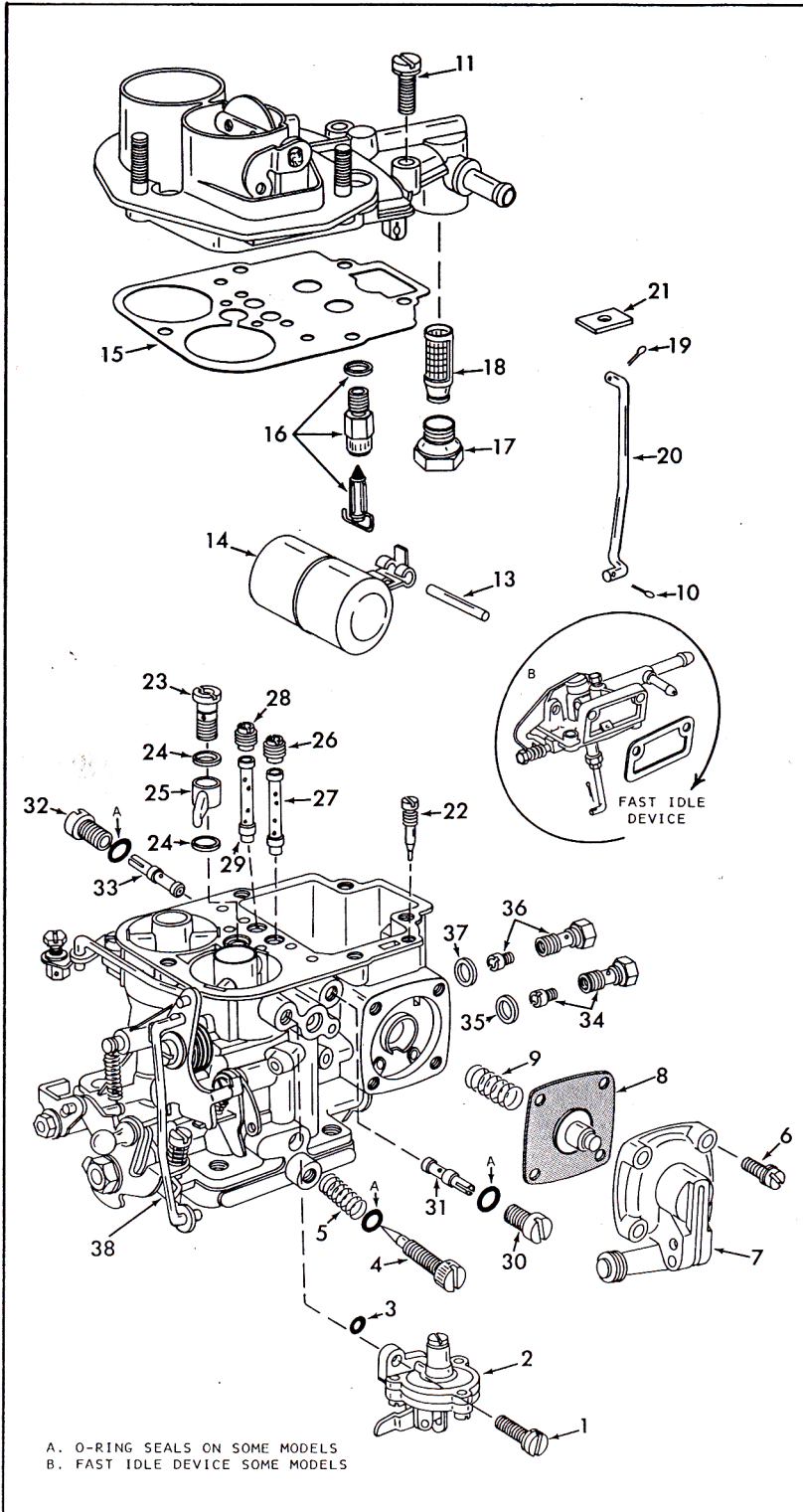
FLOAT DROP ADJUSTMENT

INSTRUCTION SHEET

WEBER CARBURETOR - MODEL 30 DIC, DICA

GENERAL EXPLODED VIEW

THE GENERAL DESIGN AND PARTS SHOWN WILL VARY TO INDIVIDUAL UNITS COVERED ON THIS INSTRUCTION SHEET.



DISASSEMBLY

USE EXPLODED VIEW AS A GUIDE. THE NUMERICAL SEQUENCE MAY GENERALLY BE FOLLOWED TO DISASSEMBLE UNIT FAR ENOUGH TO PERMIT CLEANING AND INSPECTION. BE CAREFUL TO NOTE SIZES OF JETS AND MAIN WELL TUBES AND THEIR LOCATION FOR PROPER ASSEMBLY. (RECORD SIZES ON INSTRUCTION SHEET). CAUTION: SCREWS AND NUTS USED IN THIS CARBURETOR HAVE METRIC THREADS. DO NOT SUBSTITUTE U.S. THREADED SCREWS OR NUTS.

NOMENCLATURE

REF. NO.	REF. NO.
1. SCREW & LOCKWASHER (1)- VACUUM BREAK	20. ROD-CHOKE
2. VACUUM BREAK ASSEMBLY	21. SEAL-CHOKE ROD
3. O-RING-VACUUM BREAK	22. PLUG-PUMP CHANNEL
4. NEEDLE-IDLE ADJUSTING	23. VALVE ASSEMBLY-PUMP DISCHARGE
5. SPRING-IDLE ADJUSTING NEEDLE	24. GASKET (2)-PUMP NOZZLE
6. SCREW & LOCKWASHER (4)- PUMP COVER	25. NOZZLE-PUMP DISCHARGE
7. PUMP COVER ASSEMBLY	26. JET - PRIMARY HIGH SPEED BLEED
8. DIAPHRAGM ASSY. - PUMP	27. TUBE - PRI. MAIN WELL
9. SPRING-PUMP RETURN	28. JET - SECONDARY HIGH SPEED BLEED
10. COTTER PIN-CHOKE ROD	29. TUBE - SEC. MAIN WELL
11. SCREW & LOCKWASHER (5)- BOWL COVER	30. RETAINER - PRI. IDLE JET
12. BOWL COVER ASSEMBLY	31. JET - PRIMARY IDLE
13. PIN-FLOAT HINGE	32. RETAINER - SEC. IDLE JET
14. FLOAT ASSEMBLY	33. JET - SECONDARY IDLE
15. GASKET-BOWL COVER	34. JET & PLUG - PRI. MAIN
16. NEEDLE, SEAT & GASKET ASSEMBLY	35. GASKET - MAIN JET PLUG (SOME MODELS)
17. PLUG-FILTER SCREEN	36. JET & PLUG - SEC. MAIN
18. SCREEN-FUEL FILTER	37. GASKET-MAIN JET PLUG (SOME MODELS)
19. COTTER PIN-CHOKE ROD	38. MAIN BODY ASSEMBLY

CLEANING

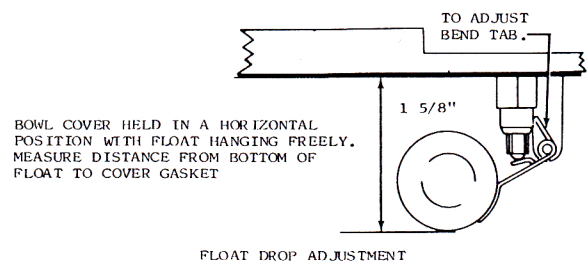
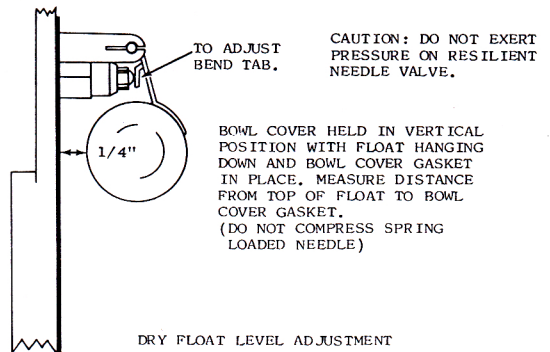
CLEANING MUST BE DONE WITH CARBURETOR DISASSEMBLED. SOAK PARTS LONG ENOUGH TO SOFTEN AND REMOVE ALL FOREIGN MATERIAL USE (1) A CARBURETOR CLEANING SOLVENT, (2) LACQUER THINNER OR (3) DENATURATED ALCOHOL. MAKE CERTAIN THE THROTTLE BORES ARE FREE OF ALL CARBON AND VARNISH DEPOSITS. RINSE OFF IN SUITABLE SOLVENT, BLOW OUT ALL PASSAGES IN CASTING WITH COMPRESSED AIR AND CHECK CAREFULLY TO INSURE THOROUGH CLEANING OF OBSCURE AREAS. CAUTION: DO NOT SOAK VACUUM BREAK ASSY. (2) OR PARTS MADE OF PLASTIC OR RUBBER MATERIAL IN ANY TYPE OF CLEANING SOLVENT.

REASSEMBLY

REASSEMBLE IN REVERSE ORDER OF DISASSEMBLY. NOTE: SPECIAL INSTRUCTIONS AND ADJUSTMENTS.

SPECIAL INSTRUCTIONS

IDLE ADJUSTING NEEDLE (4) - TURN IN UNTIL SEATED, THEN BACK OUT 1 1/2 TURNS.



A. O-RING SEALS ON SOME MODELS
B. FAST IDLE DEVICE SOME MODELS