

57092 Fit on 2009 Mitsubishi Outlander w/3.0L

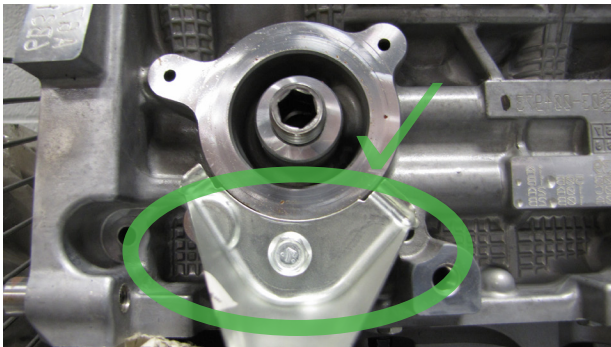


Figure 1

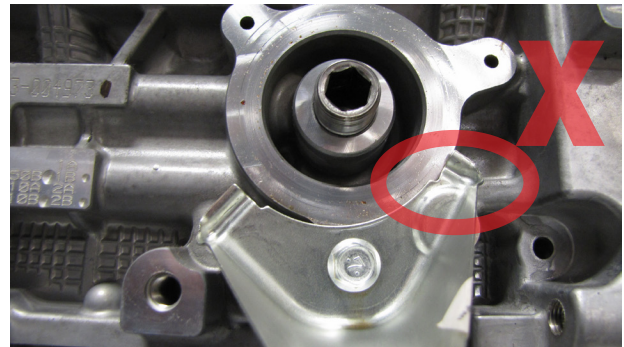


Figure 2

Prior to installing the 57092 on the noted engine, ensure that the drain tray, attached to the engine, is located in line with the adapter head seal diameter as shown in Figure 1. If the drain tray is misaligned, as shown in Figure 2, there may be the possibility of interference with the outside diameter of the filter, which could prevent the filter from sealing properly and thus resulting in possible filter leakage.

Just a reminder that it is important to always check the instructions on side of every spin-on filter, each and every time, for the proper installation instructions to insure proper tightening and fit procedures before installing.

INSTALLATION TIP