

WIX 57203 Cartridge Oil Filter Installation Tips

Installation tips for the WIX 57203 cartridge oil filter which fits numerous Ford, Mazda, Mercury (03-07) applications are as follows.

1. After removing both the old drain plug and housing cover O-ring gaskets from the housing cap, thoroughly inspect and clean the cap including the threads and the groove that the O-ring gaskets will occupy.
2. Lubricate the new O-ring gaskets, along with the gasket groove in the housing cap as well the housing cap drain plug, with a layer of clean motor oil, making sure to cover the whole area including the threads.
3. The new O-ring gasket for the housing cap needs to be installed in the groove as shown in Figure 2.0. Do not roll the new O-ring gasket past this point.
4. Tighten the cap to the recommended torque as specified on the cap, or in the owners manual. Do not over-tighten.
5. Install the new O-ring for the housing cap drain plug and tighten to the recommended torque as specified on the cap, or in the owners manual. Do not over-tighten.

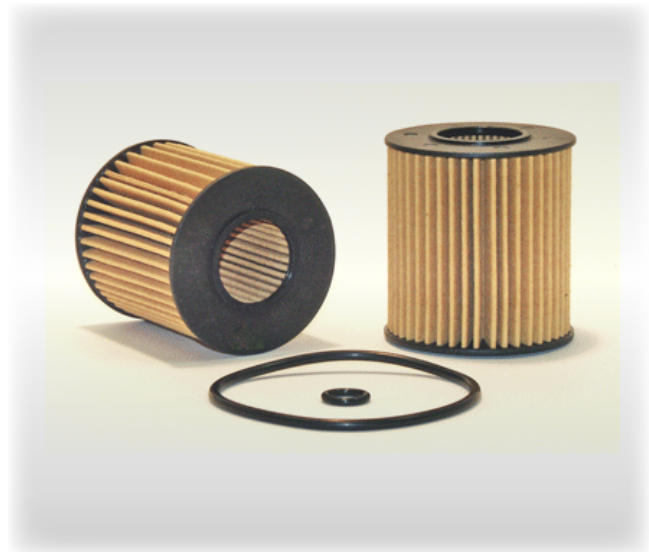


Figure 1.0 The oil filter cartridge and supplied O-rings for the housing cap (large O-ring) and drain plug (small O-ring)



Figure 2.0 The oil filter housing lid with O-ring properly installed (highlighted in orange for demonstration purposes only)